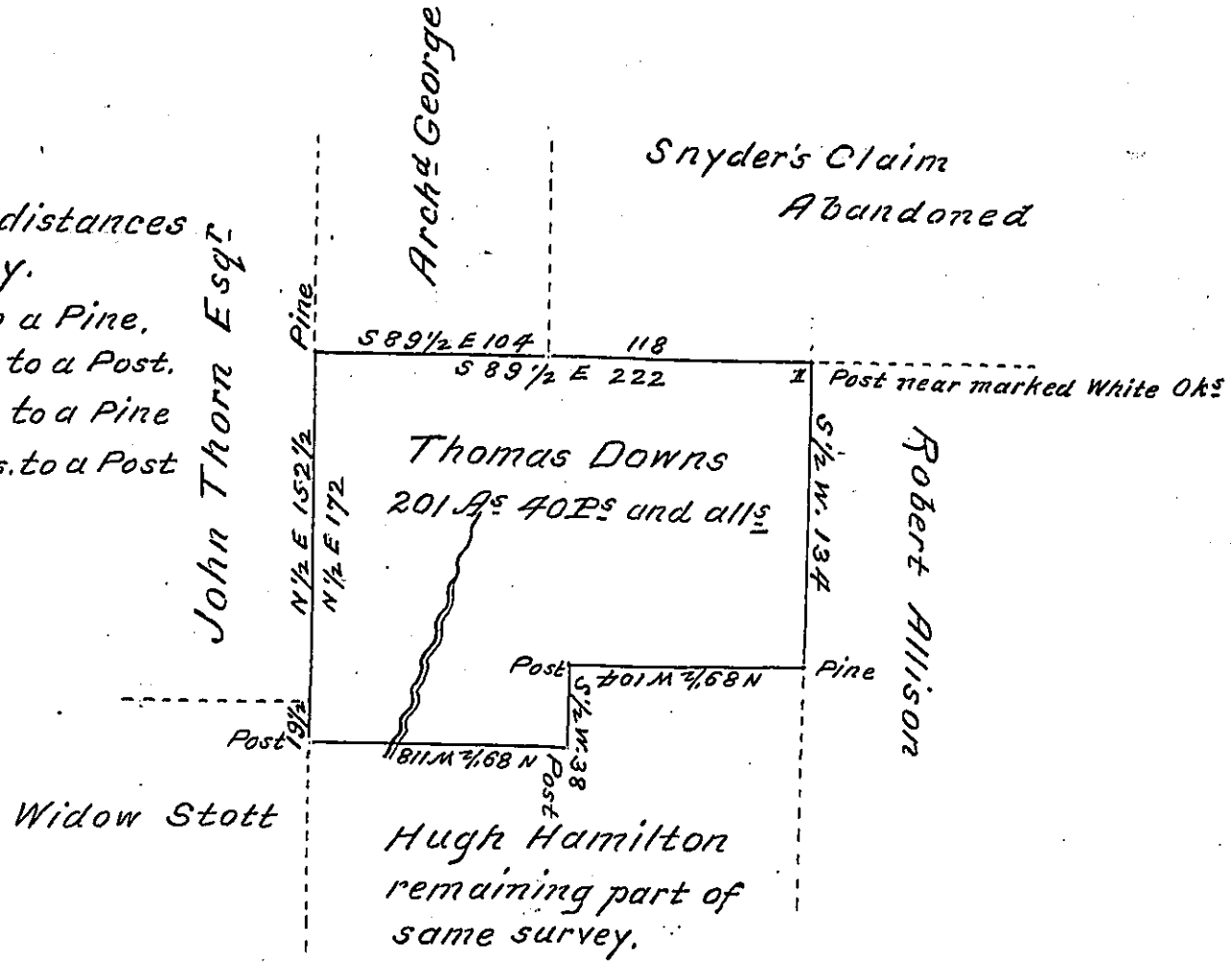


*Courses and distances of the Survey.*

- N 1/2 E. 172 Ps. to a Pine.*
- S. 89 1/2 E 222 Ps. to a Post.*
- S. 1/2 W. 134 Ps. to a Pine*
- N. 89 1/2 W. 104 Ps. to a Post*
- & C.*



*Hugh Hamilton remaining part of same survey.*

*In pursuance of a Warrant dated Nov<sup>r</sup> 24<sup>th</sup> A.D 1828 surveyed to Thomas Downs on the 12<sup>th</sup> day of May A.D 1829 the above described tract of land containing two hundred and one acres, forty perches and the allowance of six p<sup>r</sup> Ct &c situate in Clarion township Armstrong county adjoining land of Robert Alison, John Thorn Esqr, Widow Stott and Hugh Hamilton as represented by the draught*

*Gabriel Hiestler Esqr  
Surveyor Gen<sup>l</sup>*

*Robert Richards D.S.*

*IN TESTIMONY that the above is a copy of the original remaining on file in the Department of Internal Affairs of Pennsylvania, made conformably to an Act of Assembly approved the 16th day of February, 1833, I have hereunto set my Hand and caused the Seal of said Department to be affixed at Harrisburg, this fifth day of August 1904*

*George B. Brown  
Secretary of Internal Affairs.*